

31-376

FLAT RECORDING	15.00
TOTAL	15.00
Rest # BA15	Rcpt # 44482
SH DM	Blk # 1157
Jun 13, 2008	02:15 PM

PLAT OF CONDOMINIUM SUBDIVISION BUILDING LOCATION PLAN PHASE I 2700 / 2800 STONECLIFF CONDOMINIUM ASSOCIATION, INC. PORTION OF PLAT S.M. 77 - 126 THIRD ELECTION DISTRICT BALTIMORE COUNTY, MARYLAND		DRAWING NO. SHEET 1 OF 7 KCI JOB NUMBER 01053412GB
--	--	---

6
5
4
3
2
1
1
2
3
4
5
6
Maryland State Archives



FEE SIMPLE STORAGE UNIT TABLE				
NO.	AREA (SF)	BOTTOM ELEVATION	TOP ELEVATION	
S49	54	417.7'	426.7'	
S50	55	417.7'	426.7'	
S51	57	417.7'	426.7'	

LEGEND

- S42 STORAGE UNIT
- STORAGE UNIT BOUNDARY
- G.C.E. GENERAL COMMON ELEMENT
- L.C.E. LIMITED COMMON ELEMENT
- SF SQUARE FEET
- HC HANDICAP PARKING SPACE

31-377

PLAT RECORD 15.00
Reef Bn15 RCP # 44482
SH DW B1K # 1156
Jun 13, 2008 02:15 PM

ENGINEERS
PLANNERS
SCIENTISTS
CONSTRUCTION MANAGERS

10 NORTH PARK DRIVE
HUNT VALLEY, MD 21030
PHONE: (410) 316-7800
FAX: (410) 316-7817
www.kci.com

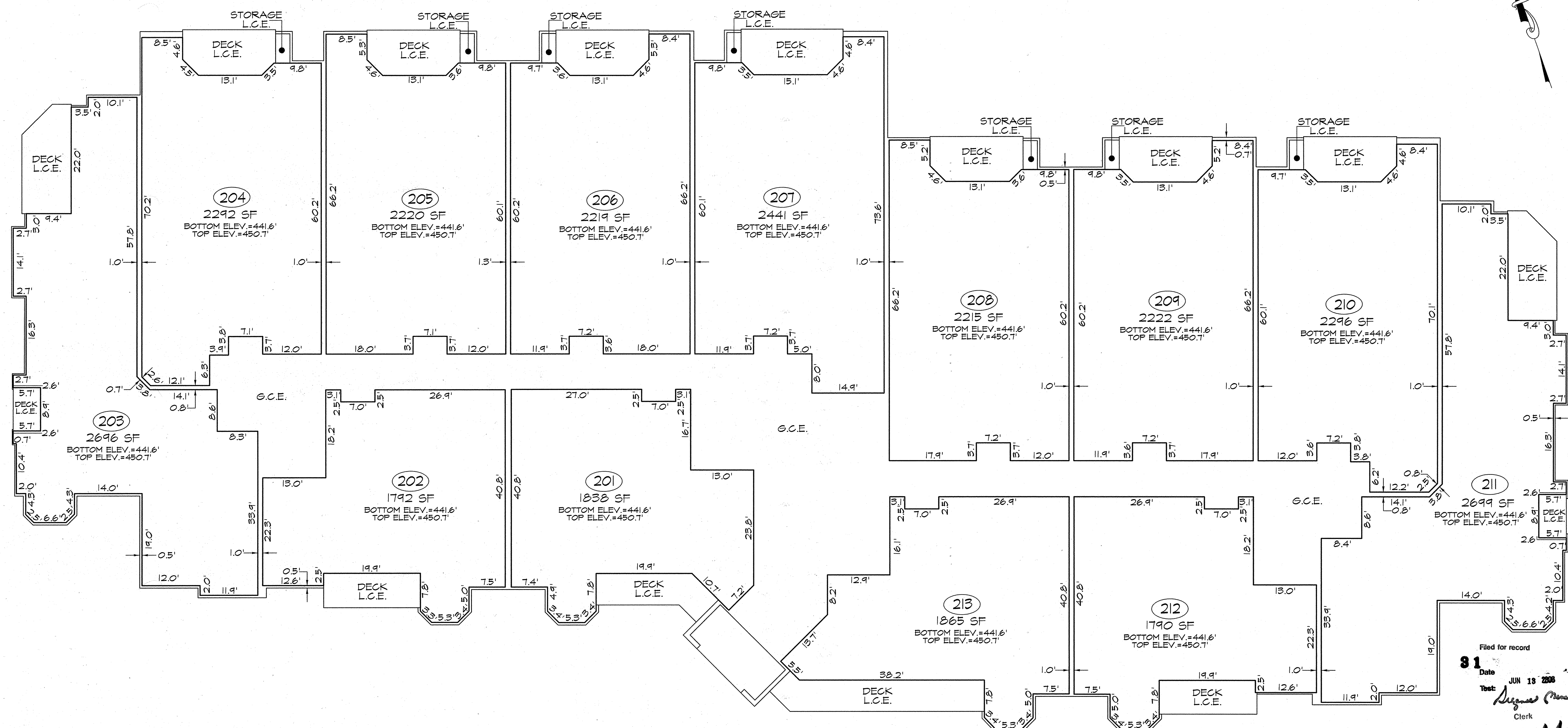
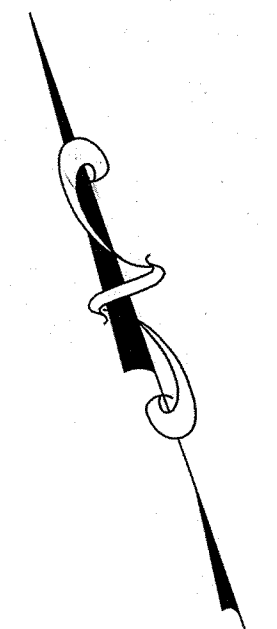
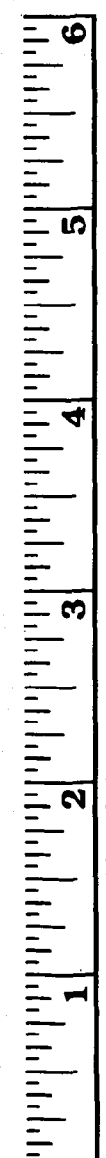
REVISIONS				DATE
NO.	DATE	DESCRIPTION	BY	
				2-20-08
				SCALE
				1"=10'
				DESIGNED BY
				R.L.C.
				DRAWN BY
				M.J.W.

PLAT OF CONDOMINIUM SUBDIVISION
GARAGE LEVEL
PHASE I
2700 / 2800 STONECLIFF
CONDOMINIUM ASSOCIATION, INC.
PORTION OF PLAT SM, TT - 126
THIRD ELECTION DISTRICT

DRAWING NO.

SHEET 2 OF 7
KCI JOB NUMBER
10105391808

PLOTTED: 08:43 AM on Friday, May 30, 2008
PLOTTER: HP DesignJet 2400C
FILE: M:\2008\10105391808\Garage\Garage.dgn
Baltimore County Circuit Court (Condominium Plats, BA) Condominium Book SM 31, pp. 376-382, MSA, S1285, 1777. Date available 2008/06/13. Printed 05/30/2016.



Filed for record
81
Date JUN 18 2008
Test: [Signature]
Clerk

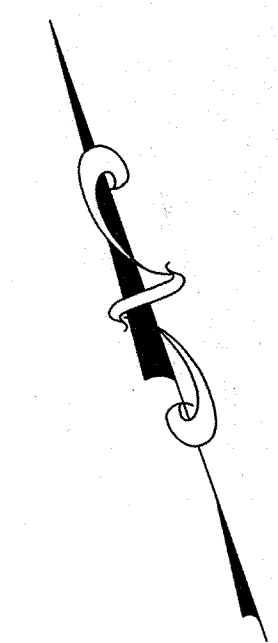
SM
31-379

LEGEND
UNIT BOUNDARY
G.C.E. GENERAL COMMON ELEMENT
L.C.E. LIMITED COMMON ELEMENT
SF SQUARE FEET

PLAT RECORDIN
TOTAL 15.00
Res# 14482
SH 1154
JUN 13 2008

 ENGINEERS PLANNERS SCIENTISTS CONSTRUCTION MANAGERS 10 NORTH PARK DRIVE HUNT VALLEY, MD 21030 PHONE (410) 316-7800 FAX (410) 316-7817 www.kci.com	REVISIONS			DATE
	NO.	DATE	DESCRIPTION	BY
DESIGNED BY R.L.C.				2-20-08
DRAWN BY M.J.W.				1"=10'
PLAT OF CONDOMINIUM SUBDIVISION SECOND FLOOR CONDOMINIUM UNITS PHASE I 2700 / 2800 STONECLIFF CONDOMINIUM ASSOCIATION, INC. PORTION OF PLAT S.M. 71 - 126 THIRD ELECTION DISTRICT				DRAWING NO. SHEET 4 OF 7 KCI JOB NUMBER 01053910GB

p152082 MSA SSU 1265 1777-4



SM
31-380

FLAT RECORDING 15.0
TOTAL 15.00
Rest B415 Rpt # 44482
SM DM Blk # 1153
Jun 13, 2008 02:14 PM

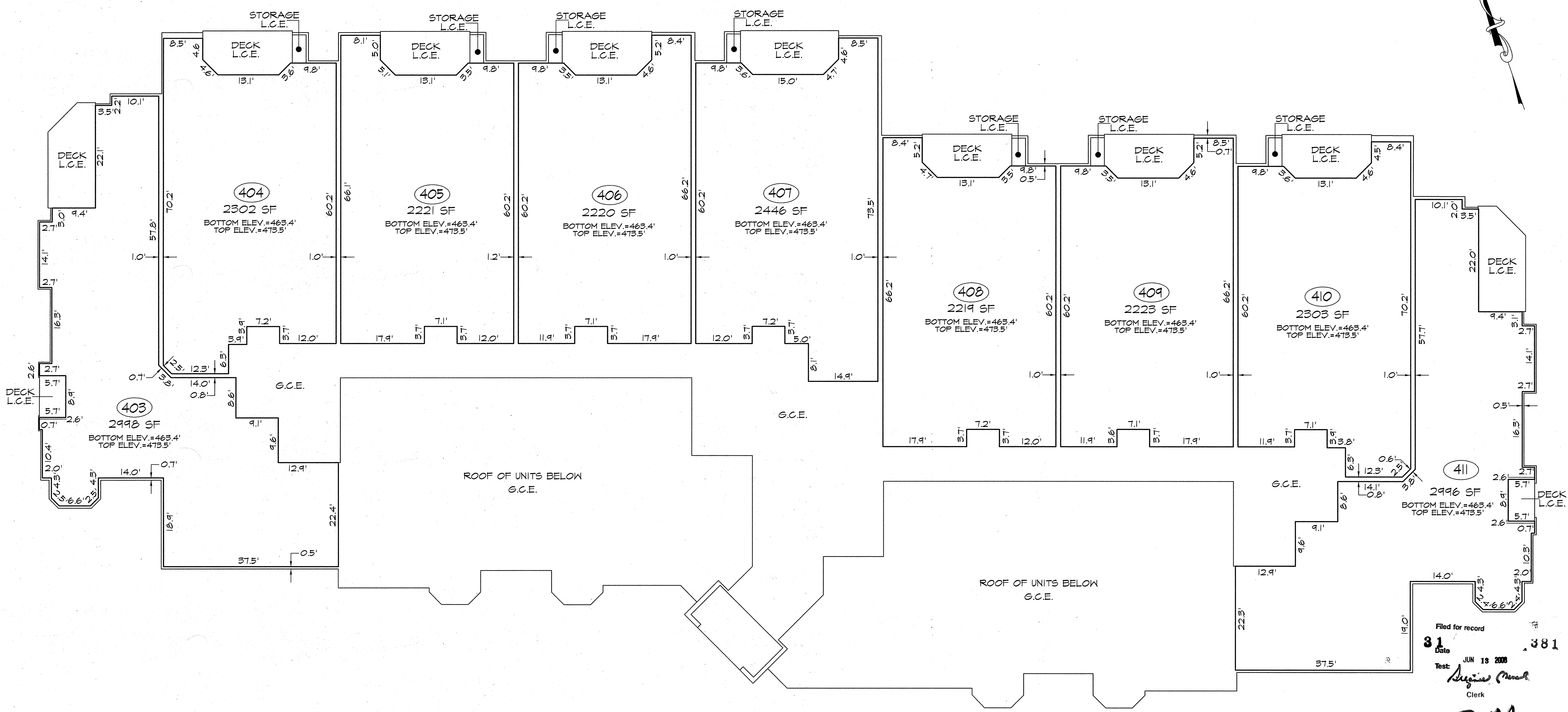
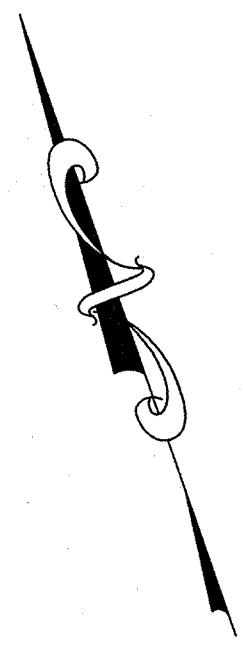
PLAT OF CONDOMINIUM SUBDIVISION
THIRD FLOOR CONDOMINIUM UNITS
PHASE I
2700 / 2800 STONECLIFF
CONDOMINIUM ASSOCIATION, INC.
PORTION OF PLAT SM. 77 - 126
THIRD ELECTION DISTRICT BALTIMORE COUNTY, MARYLAND



KCI
TECHNOLOGIES

*ENGINEERS
PLANNERS
SCIENTISTS
CONSTRUCTION MANAGERS*

10 NORTH PARK DRIVE
HUNT VALLEY, MD 21030
PHONE (410) 316-7800
FAX: (410) 316-7817
www.kci.com



Filed for record
31
Date JUN 13 2008
Test: *Signature*
Clerk

SM
31-381

LEGEND

- UNIT BOUNDARY
- G.C.E. GENERAL COMMON ELEMENT
- L.C.E. LIMITED COMMON ELEMENT
- SF SQUARE FEET

PLAT RECORDING
TOTAL
Reel 1815
SN 101
JUN 13 2008
RCP # 44492
BIL 1152
20213 PM

PLOTTED: 08:47 AM on Tuesday, May 27, 2008
BY: Michael Volante
FILE: W:\2008\1053393\CONDO\31-381\K-2 CONDO\K-2_FOURTH.FLOOR.dgn

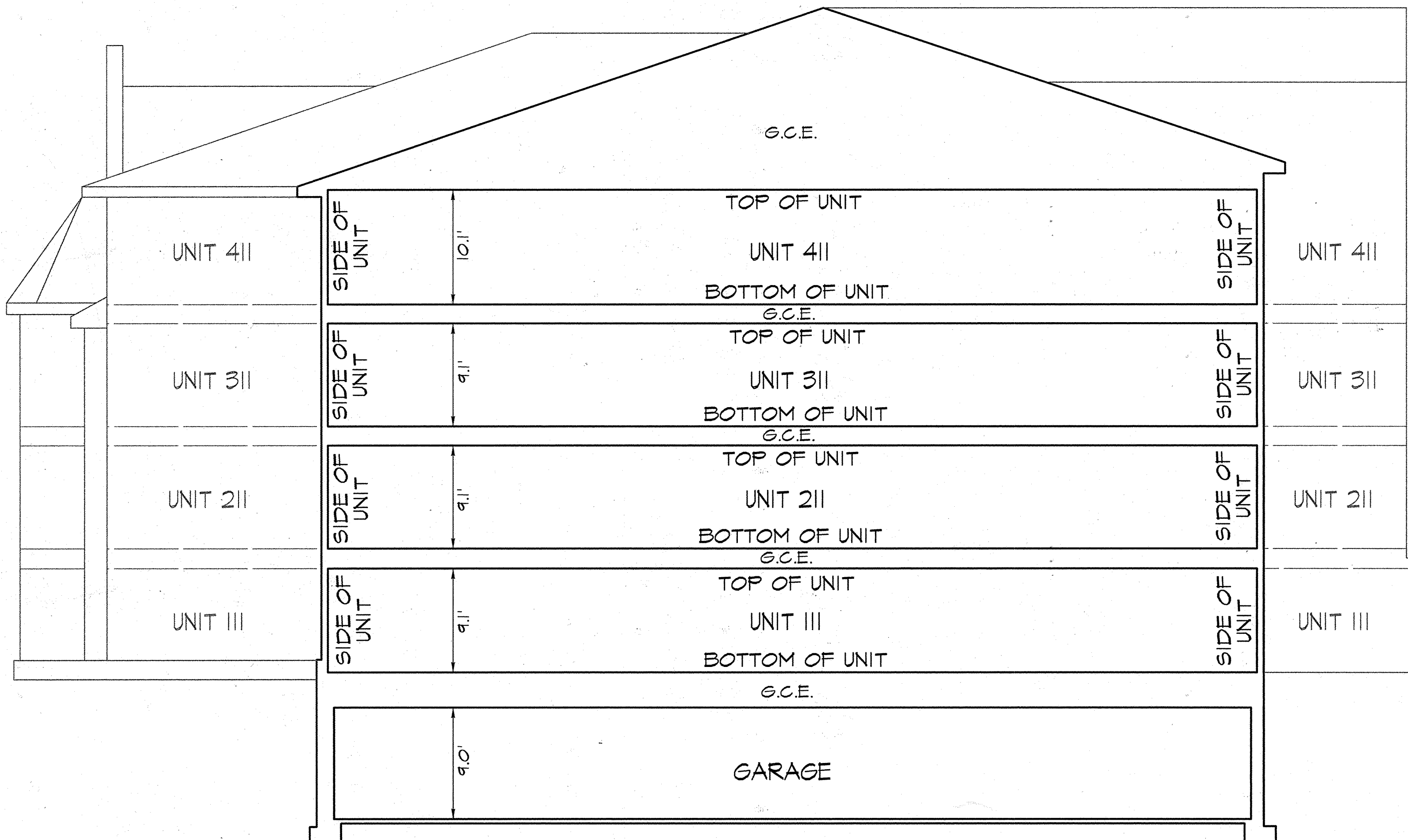
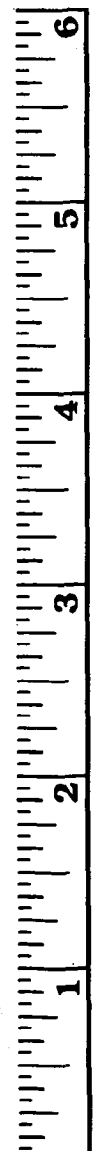
KCI
TECHNOLOGIES
ENGINEERS
PLANNERS
SCIENTISTS
CONSTRUCTION MANAGERS
10 NORTH PARK DRIVE
HUNT VALLEY, MD 21030
PHONE: (410) 316-7800
FAX: (410) 316-7817
www.kci.com

REVISIONS				DATE
NO.	DATE	DESCRIPTION	BY	
				2-20-08

PLAT OF CONDOMINIUM SUBDIVISION
FOURTH FLOOR CONDOMINIUM UNITS
PHASE I
2700 / 2800 STONECLIFF
CONDOMINIUM ASSOCIATION, INC.
PORTION OF PLAT S.M. 71 - 126
THIRD ELECTION DISTRICT BALTIMORE COUNTY, MARYLAND

DRAWING NO.
SHEET 6 OF 7
KCI JOB NUMBER
0105391808

p152684 MSA SSN 1265 1777-6



TYPICAL SECTION
NOT TO SCALE

Filed for record
31 Date JUN 13 2008 382
Test: *Reginae (Clerk)*
Clerk

SM
31-382

PLOTTED: 0856 AM on Tuesday, May 27, 2008
BY: Michael Molinas Division: 0106 Surveys
FILE: M:\2008\3103382\3103382.dwg K-2, Condo\K-SECTION.dgn

 ENGINEERS PLANNERS SCIENTISTS CONSTRUCTION MANAGERS 10 NORTH PARK DRIVE HUNT VALLEY, MD 21030 PHONE (410) 316-7800 FAX (410) 316-7817 www.kci.com	REVISIONS			DATE
	NO.	DATE	DESCRIPTION	BY
PLAT OF CONDOMINIUM SUBDIVISION TYPICAL SECTION PHASE I 2700 / 2800 STONECLIFF CONDOMINIUM ASSOCIATION, INC. PORTION OF PLAT SM. 77 - 126 THIRD ELECTION DISTRICT BALTIMORE COUNTY, MARYLAND				DRAWING NO. SHEET 7 OF 7 KCI JOB NUMBER 01053418QB

PLAT RECORDIN 15.00
TOTAL 15.00
Res# 8415 Rcp # 44482
SM DM B1K # 1151
Jun 13, 2008 02:13 PM

MSA SM 1265 1777-7